

# HINT ERBAUHALTER REAR MOUNTING BRACKET ET

## Hinterbauhalter für SL-SA Leuchtenserie

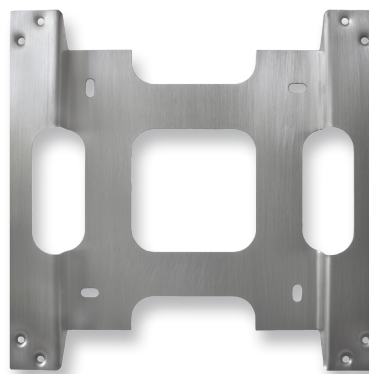
Hinterbauhalter aus Edelstahl V4A zur allseitigen Kabel-Aufputzmontage.

Der Halter ist als Zubehör separat zu bestellen.

## Rear mounting bracket for SL-SA luminaire product range

Rear mounting bracket made of stainless steel V4A for cable sur-face mounting from all sides.

The rear mounting bracket has to be ordered separately as an accessory.



## Technische Daten Technical specifications

Gehäuse  
Casing

Edelstahl V4A  
Stainless steel V4A

Abmessungen (B x H x T)  
Dimensions (W x H x D)

186,6 x 186,6 x 17,6 mm

